



Reef Watcher Production

Contributions welcome: info@reefwatch.asn.au
All contributions are subject to editing.
Deadline for next issue: 19th June, 2009

Marine Parks - have your say

In late January, the State Government released the proposed outer boundaries for a series of 19 Marine Parks in South Australia. The proposed boundaries cover 27,800 square kilometres of South Australian waters, nearly half of the state's marine area.

The Department for Environment and Heritage have been keen to emphasise that recreational activities such as fishing, swimming, diving and boating will all be allowed through a multiple-use management approach, which provides zones for various activities.

Reef Watch and the Conservation Council of SA (CCSA) encourage you to have your say about the outer boundaries of the proposed Marine Parks by providing a submission to DEH. Reef Watch and CCSA applaud the State Government for showing leadership and finally announcing a system of Marine Parks, but there is a long way to go if they are to achieve any kind of serious protection. Impacts to marine systems are on the increase and the time to act is now, if we are to preserve these environments. It is far easier to look after what we have than try to fix things once they are damaged.

The key to these marine parks will be in the zoning, which will happen sometime next year. At present the consultation period is only

about the outer boundaries, and many angry commercial and recreational fishers are howling for the government to make the parks smaller. This needs to be balanced by input from conservationists, divers, and people who enjoy the marine environment and wish to see it protected. The Reef Watch Steering Committee will make a submission on behalf of Reef Watch, but it is important that individuals make submissions as well.

As the DEH ad campaign says, size does matter, and the fact that the parks are large is a good thing. It means that the entire area of water inside the boundaries will be covered by a management plan. Marine Parks need to be managed according to best practice adaptive management and the SA government have opted for multiple use parks. This means large areas will be 'business as usual'. There will be some habitat protection zones, where no damaging uses will be allowed (e.g. trawling). However, the 'no take' Sanctuary Zones are likely to be small, and it will be up to us to argue for larger sanctuaries.

We know that healthy natural environments are more resilient to threats such as climate change. The cost of inaction in this respect, both economically and socially, would be far greater than any short term losses associated with declaration of the parks.

There is lots of information about the process on the Marine Parks website: www.environment.sa.gov.au/marineparks/ You can make a submission in several ways:

- Online submission tool (you can also go on the mailing list to keep up to date with information): <https://www.envapps.sa.gov.au/opinio6/s?s=582>
- Phone 1800 006 120 or email: marineDEH@saugov.sa.gov.au to receive a submission form in the post.
- Or just write a letter, addressed to: Marine Parks Network Submissions, Coast and Marine Conservation, DEH, PO Box 1047, Adelaide 5001.

Submissions are due by 27th March, 2009.

Second Valley by Alison Eaton



Diving at Port Hughes - a sensation

Port Hughes jetty was completed in 1913 as a deeper water alternative to the nearby Moonta Bay jetty. Originally the jetty was 430m long but was later shortened to its present length of 417m.

The jetty mainly serviced the local farming community for the export of grain. It was also expected that the jetty would service the Moonta mines but there was difficulty laying a rail track across the several kilometres of sand between the mines and the jetty. The commercial use of the jetty was

short lived with the Wallaroo jetty built in the late 1920's in much deeper water.

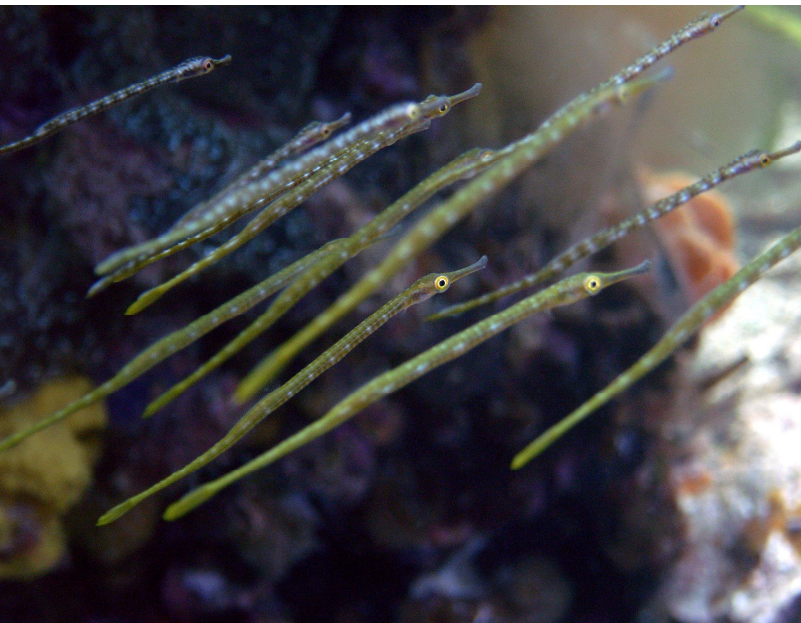
The jetty is a very underrated dive site. Entry is via a set of steps on the northern side of the jetty about 1/3 of the way along. Don't be fooled by the shallow depths. In fact, the shallow depth allows for extended bottom time to explore the amazing marine life to be found there. Under the jetty the fish life is usually prolific with big schools of horse mackerel. Look closely in the weed under the jetty to find pipefish, weedy sea

dragons and seahorses. Watch out for the blue crabs that regularly raise their claws at divers that come too close before swimming away into the distance. Nudibranchs are also found on the pylons and amongst the debris under the jetty. Take your time to fossick amongst the shells towards the end of the jetty and you might find an anglerfish, blue-ringed octopus or even a warty prowfish. The jetty is also a fantastic night dive with catfish and shrimp out to play.

By Paul Macdonald, Reef Watch volunteer



Paul took these stunning images at Port Hughes jetty during the last couple of years. According to Neville Coleman (nudibranch expert), the orange nudibranch (above left) has never been recorded in South Australia before.



Reef Watch first intensive training weekend - a success

Reef Watch Instructors Steve Leske and Mark Kaehne ran the first ever Reef Watch advanced training course in Second Valley in February.

Over the weekend 7 volunteers enjoyed perfect weather and visibility to review their skills in survey techniques, watch ID slide shows and take part in photo and buoyancy workshops. The rest of the weekend was spent practicing all of these skills on dives at Lassiters, Rapid Bay and Second Valley point.

The group identified over 60 different fish species during the weekend including a Leafy Sea Dragon and a Warty Prow Fish.

Thanks to Sharon and Andrew Beckmann for hosting the group in the perfect accommodation.

The next advanced training weekend will take place in Edithburgh from the 13-15th of March.

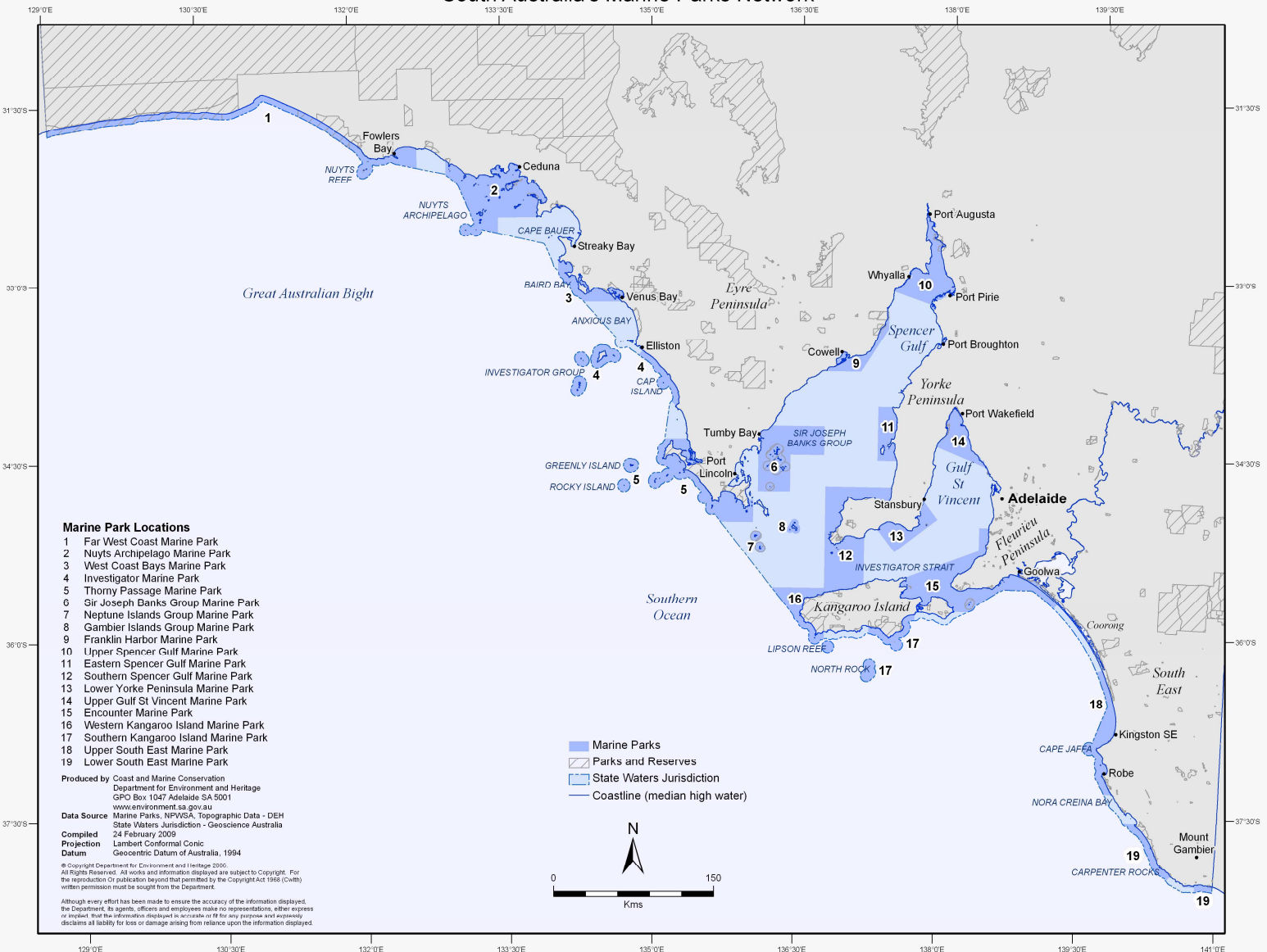
Accommodation, breakfasts and airfills paid by Reef Watch but places are limited with 1st preference given to those who have undertaken some Reef Watch training.



Warty prowfish by Steve Leske

For more info or to register your interest contact Steve: info@reefwatch.asn.au

South Australia's Marine Parks Network





Conservation Council
of South Australia Inc

Marathon Fish Count

29th March

Noarlunga Reef

Come and count fish for fun!

BYO dive gear - identification slates & data sheets provided for free.

Fish Count will be followed by a free BBQ for hungry volunteers.

You **MUST register** to attend this event.

Also on the day – displays, t-shirts for sale, staff available to answer your questions about the marine environment.

Contact Steve Leske 0400 272 177

Email: info@reefwatch.asn.au

www.reefwatch.asn.au



Australian Government



**Government
of South Australia**

Adelaide & Mount Lofty Natural Resources Management Board
Northern & Yorke Natural Resources Management Board
Primary Industries & Resources SA

Name a new species of shrimp

In early April this year, a small spotted shrimp discovered deep in the waters of south west Australia, will be given a new scientific name. PhD student, Anna McCallum, who discovered the shrimp, has generously chosen to auction the naming rights of the shrimp and dedicate all profits from the auction towards marine conservation. This is a rare and exciting opportunity!

The online auction will begin at 9 am (QLD time) on 22nd March, 2009 and ends at 9 am on 31st March, 2009. The auction will run through eBay.

To appreciate this special shrimp and their chosen name, the successful bidder will receive a framed painting of the newly discovered shrimp by scientific artist, Mali Moir. Mali has worked at the National Herbarium of Victoria since 1992 and exhibits her work widely in Australia and internationally. She combines her

fascination for science and natural history with an active desire to render works of art with beauty, character and scientific merit.

Proceeds from the auction will go towards the Australian Marine Conservation Society's work to protect Australia's precious south-west oceans, home of the new species.

This small shrimp is a mysterious little creature living in the dark depths of the ocean. Despite living 400 metres below the surface, this newly described species has a jewel like appearance. Morphing from yellow to green, this lovely shrimp is covered in scarlet spots and sports a toothed crest across the top of its body, which gives it the appearance of having a Mohawk.



Ocean survey reveals hundreds of 'bipolar' species

Of the thousands of species that populate Antarctica and the Arctic, it seems hundreds are "bipolar": found spanning 11,000 kilometres between the polar regions.

The surveys, part of the international Census of Marine Life, also suggest the Antarctic acts as a cold incubator for species that populate the deep sea around the planet. As ice ages come and go, and the ice shelf advances and

retreats, species are isolated, evolve, then released to the global sea floor. The 235 species that we believe are found at both poles include a great variety of animals, says Julian Gutt of the Alfred Wegener Institute for Polar and Marine Research in Germany.

The easiest ones to explain are the large migrating organisms, such as whales and birds. But the list also includes a large number of animals

that are thought to live relatively sedentary lives.

For instance, *Elpibia glacialis*, is a sea cucumber that can be just as comfortable at 80 or 8000 metres beneath the waves - a feat in itself.

Even more remarkable, different teams, working at opposite poles, think they have found the same species in both places.

Source and complete article:
<http://www.newscientist.com/article/dn16609>

Climate futures: 12 part public lecture series

The *Climate Futures* lecture series 'Climate Change Mitigation and Adaptation' explores leading edge developments to enable society to adapt to anticipated future changes in our climate.

The Climate Futures lecture series will be presented on **Wednesdays** at **5-7pm** in the Horace Lamb Lecture Theatre, University of Adelaide North Terrace campus, from **4 March** to **8 April** and from **29 April** to **2 June**. Note that the final presentation is on **Tuesday 2 June** at **6-8pm**.

The 12 lectures are convened by specialists in these fields, and will feature 2-3 expert speakers. The presentations are suitable for anyone with an interest in the challenges posed by climate change for a sustainable society.

All are welcome. The seminars are free of charge and registration is recommended using the email address below:

Email: environment@adelaide.edu.au

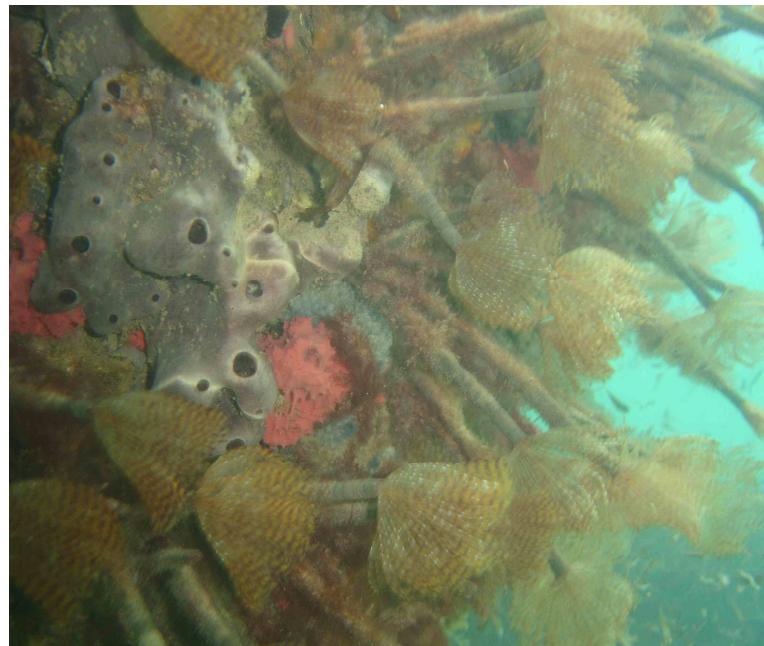
European fan worms eradicated from Brighton jetty?

As part of this years Clean Up Australia Day dives, Reef Watch divers again targeted the Feral European fan worms (*Sabella spallanzanii*) at Brighton jetty. Divers completed two dives and appear to have removed this invasive species.

The mammoth effort began on Clean Up day last year with teams of divers removing thousands of animals from the jetty pylons over 3 weeks, with many of the first divers overwhelmed by the sheer number of the pests present on most pylons.

The divers task was assisted by local fish and invertebrates who happily ate any worm remains left on the pylons.

For more information on the Reef Watch Feral or in Peril program contact Steve Leske on 0400272177 or info@reefwatch.asn.au or www.reefwatch.asn.au/ferilInPeril.html



Images show Brighton jetty at this time last year. Photos: Steve Leske



Many thanks to our generous sponsors and supporters

CSA acknowledges that Reef Watch currently receives most of its funding from the Adelaide and Mount Lofty Ranges Natural Resources Management Board.

Reef Watch also acknowledges the generous support of the diving industry for Reef Watch events.

Other supporting organisations include:

- Primary Industries and Resources SA via SARDI Aquatic Sciences
- Northern & Yorke NRM Board
- Department for Environment and Heritage



**Government
of South Australia**



Australian Government



**Conservation Council
of South Australia Inc**

If undeliverable return to:

Conservation Council of SA
Level 1/157 Franklin Street
Adelaide 5000
SA

Postage
Paid
Australia



Help save time, money and the environment! Please send me Reef Watcher via email only. Email your details: info@reefwatch.asn.au

New edition of 'Sharks & Rays of Australia'

The first edition of this well known book was produced in 1994 and since then, 29 species have been discovered in Australian seas and more than 100 species have been named and formally described.

Spookfish, numbfish, stingarees, fiddler rays and cookie-cutter sharks are just some of the 322 species illustrated in this latest edition.

As well as the new discoveries, the new edition, published by CSIRO,

includes updated species classifications and descriptions, distribution maps, line illustrations, family keys and outlines of Chondrichthyan biology.

"More than a quarter of the world's Chondrichthyan fauna is found in Australian seas, and many of the species that live on the continental slope have only been discovered in the past three decades" says Dr Peter Last, director of the Australian National Fish Collection in Hobart.

Dr John Stevens, co-author with Dr Last, says sharks and rays live at the top of the food chain and play an important role in marine ecosystems. "But many do not reach sexual maturity until 10-12 years old, so the number of young they produce is closely linked to the size of the adult population. There is growing concern about the sustainability of stocks throughout the world, and several species are listed by national and international bodies as endangered" he says.

Source: <http://www.csiro.au/news/New-edition-Sharks-and-Rays-of-Aust.html>